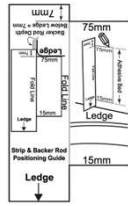


FlangeBand® TileBud Plus SEALUX®

TileBud Plus Kit Contents Include:



Adhesive Backed Backer Rod



Strip Alignment Card (Box Flap)



Alcohol Wipes



Sealant Smoothing Spatula



Installation Instructions



SEALUX30 Strip



Backer Rod Alignment Guide

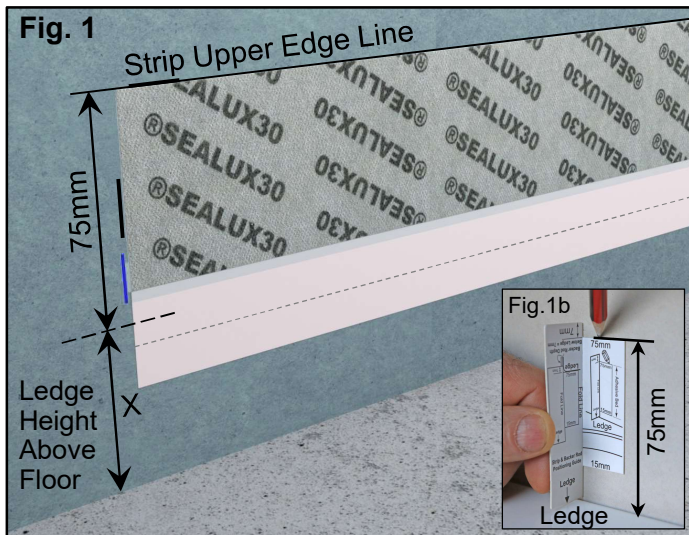


Sealant Spreading Spatula

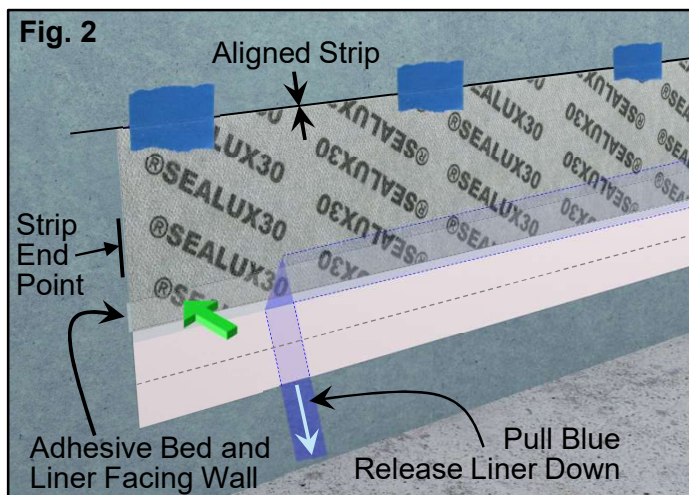


Backer Rod Insertion Wheel

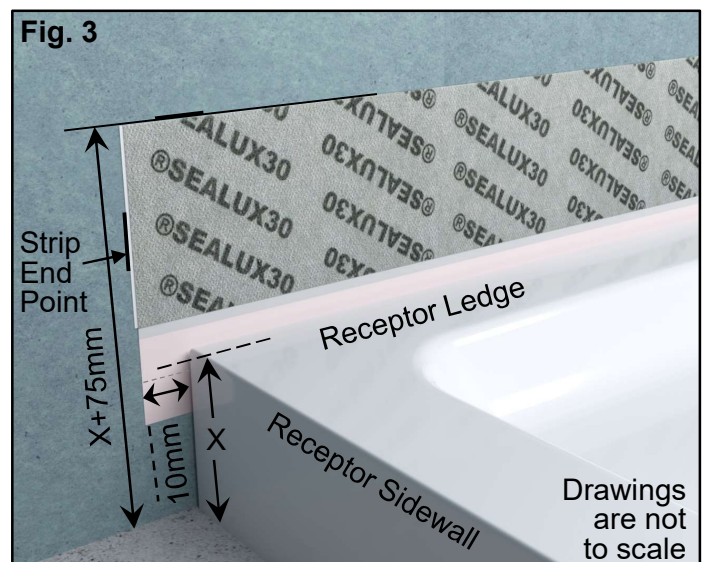
Install TileBud Plus During Installation of a Shower Base or Bathtub



(1) Mark strip start and end points on wall 10mm outside proposed receptor (bathtub/shower base) ends (Fig. 3). To define position of strip upper edge line on wall, apply wall marks $X+75\text{mm}$ above floor, where X will be receptor ledge height above floor after installation (Figs. 1 & 3).



Alternatively, the strip upper edge line position on wall can be defined by installing receptor temporarily in its final position, resting the folded strip alignment card on ledge and marking the walls 75mm above ledge (Fig. 1b). Draw wall lines through wall marks. **(2)** Measure and cut strip to length. **(3)** Referring to Fig. 2, using painter's tape tabs, align and hang the strip in position on the wall ensuring the strip extends fully into wall corner(s). Progressively pulling blue release liner downward off back of strip, press-bond exposed adhesive bed to wall without creasing strip in the process. Remove the painter's tape tabs when done. **(4)** Fold the strip upper portion back and using an approved sealant adhesive, thin set mortar or waterproofing compound, bond the strip upper portion permanently to the wall (Fig. 3), using the spatula to press the strip firmly against wall and push strip fully into wall corner(s).



FlangeBand® TileBud Plus SEALUX®

(5) Using the alcohol wipes, clean the receptor ledge and sidewalls intended to engage silicone (Fig. 7).

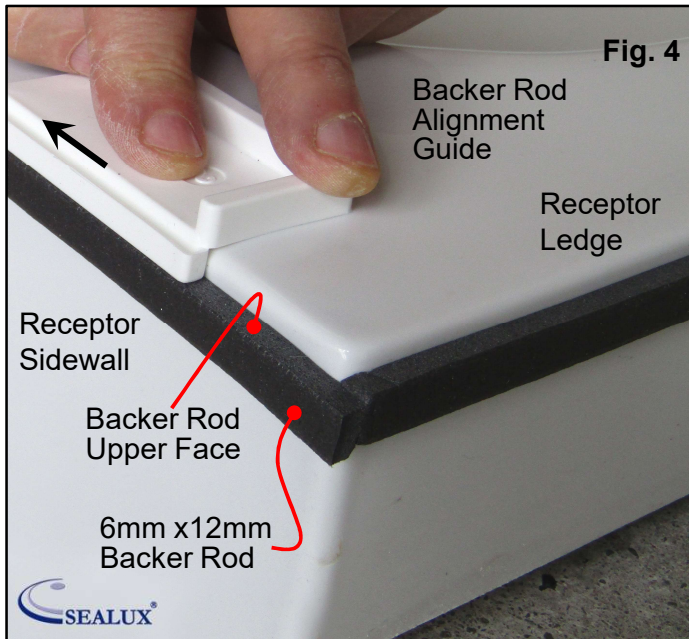
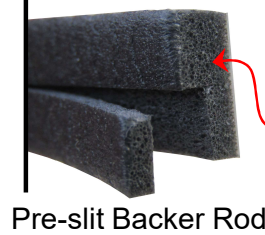


Fig. 5



Pre-slit Backer Rod

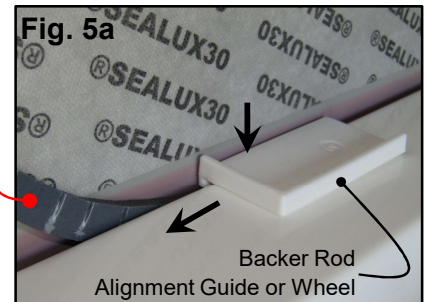


Fig. 6

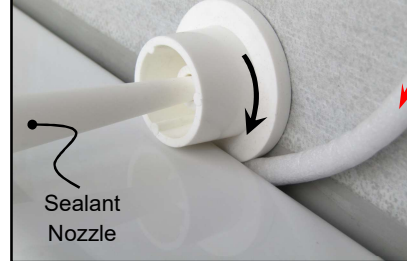
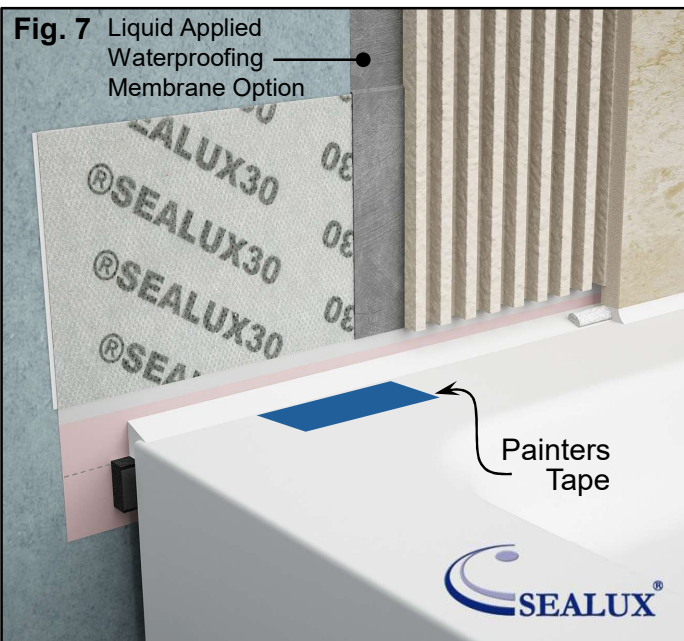


Fig. 6a

(6) **Installing the backer rod:** Sliding the backer rod alignment guide along the ledge as shown above, progressively remove the release liner off the backer rod and bond the exposed adhesive face to the receptor sidewall keeping the backer rod upper face lightly touching the underside of the alignment guide during the process (Fig. 4).



(7) **In 3-sided shower enclosures** the width between opposing shower walls may not allow the installation of a receptor with the 6mm x 12mm backer rod pre-bonded to the opposing receptor sidewalls. In such conditions the installer can opt to bond the 6mm x 12mm backer rod onto the middle receptor sidewall before installing the receptor in position and retro-insert an appropriately sized backer rod into the two opposing strip/sidewall joints after installation of the receptor (Figs. 5/6).

The 6mm x 12mm backer rod may be supplied pre-slit (Fig. 5) to allow a portion to be torn off for more compression during retro-insertion into a joint. A 6mm round backer rod may also be a good option.

(8) Before installing the receptor, apply painter's tape just outside the ledge corners to prevent smearing silicone on the receptor ledge during installation (Fig. 7).

(9) Install the receptor with the pre-applied foam backer rod lightly pressing against the strip bonded to wall (Fig. 7). Ensure the receptor rests steady on the floor. Check receptor waste outlet and pipe joints for leaks.

(10) Apply a neutral curing sanitary grade silicone into first side joint and rub up silicone ensuring the exposed sealant upper face falls downward from wall to ledge. Whichever backer rod can be inserted into the opposing joints of a 3-sided shower enclosure or not, in all circumstances always ensure a **minimum** silicone engagement of at least **6mm** is made with both the strip and adjacent receptor sidewalls. Seal remaining joints in a similar fashion. Remove the painter's tape off receptor ledge when finished.